

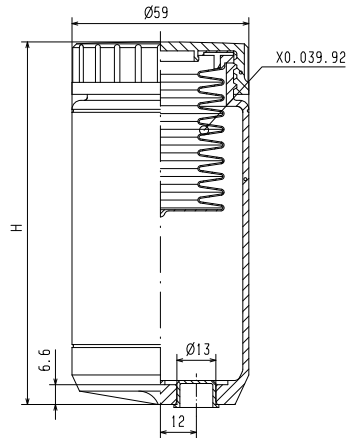
Master Cylinders & Reservoirs



4



++++
 ++++ **P/N 10.8687.10/13**
 ++++ **STANDARD RESERVOIRS**
 ++++



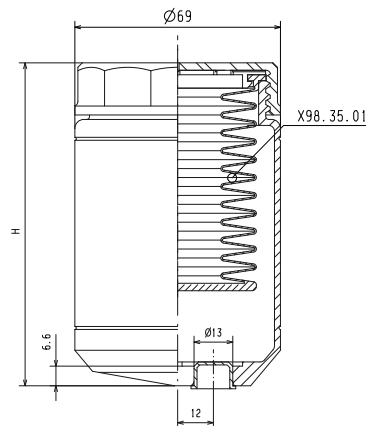
	Nipple kit	Aluminium	R	10.8687.22
	Nipple kit	Aluminium	R	10.8687.26

Part number	Volume[cm ³]	H
R 10.8687.10	83	75.5
R 10.8687.11	163	110.5
R 10.8687.12	180	120.5
R 10.8687.13	238	148.5

	Nipple		Nut		Washer		O-ring
--	--------	--	-----	--	--------	--	--------

4

++++
 ++++ **P/N 10.8687.14/15**
 ++++ **GRAN TOURING RESERVOIRS**
 ++++



	Nipple kit	Aluminium	R	10.8687.22
	Nipple kit	Aluminium	R	10.8687.26

Part number	Volume[cm ³]	H
R 10.8687.14	199	108.4
R 10.8687.15	304	144.5

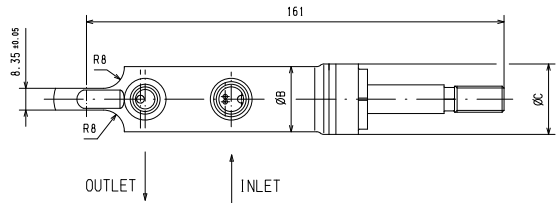
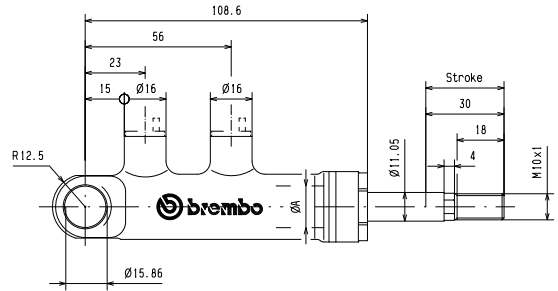
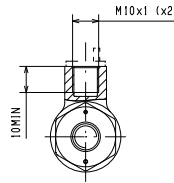
	Nipple		Nut		Washer		O-ring
--	--------	--	-----	--	--------	--	--------

++++
 ++++
 ++++
 ++++

++++
 ++++
 ++++
 ++++

P/N X97.54.11/16

FRONT PIVOT FIXING MASTER CYLINDER

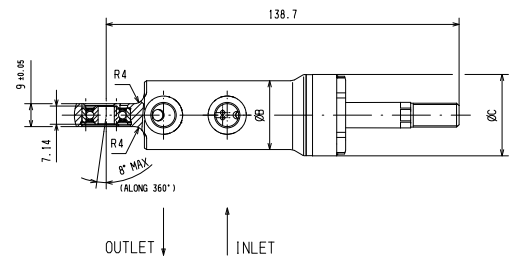
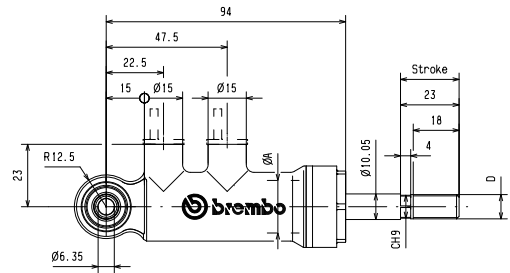
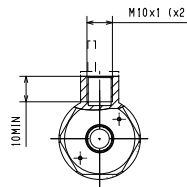


ØA	ØB	ØC		Part Number
15	25	27	X	97.54.11
16	25	27	X	97.54.12
17	25	30	X	97.54.13
18	25	30	X	97.54.14
19.05	25	30	X	97.54.15
20.64	26	30	X	97.54.16

4

P/N XA2.L2.A7/F7 – XA3.G1.32/45

FRONT PIVOT FIXING WITH VERTICAL BEARING MASTER CYLINDER

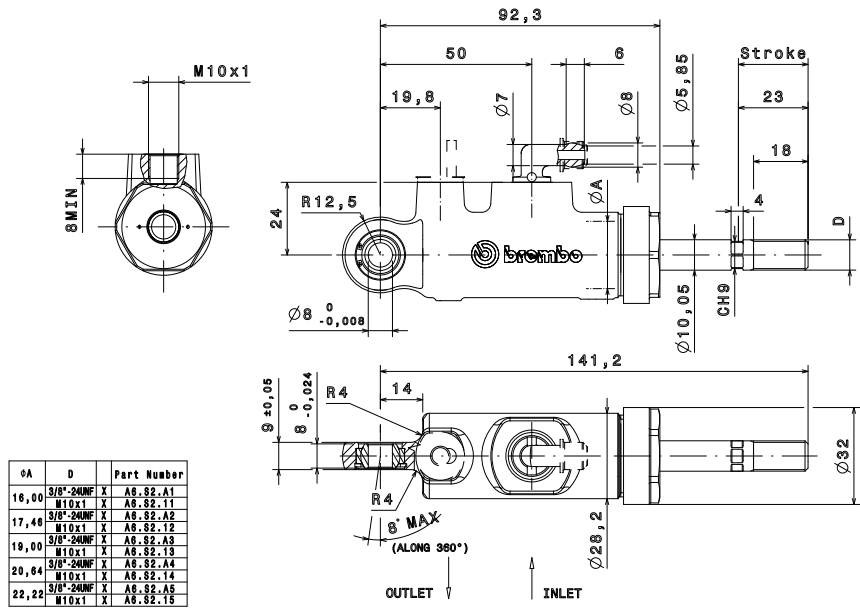


ØA	ØB	ØC	D	Part Number	
16.00	25	30	3/8"-24UNF	X	A3.G1.42
			M10x1	X	A3.G1.32
17.46	25	30	3/8"-24UNF	X	A3.G1.44
			M10x1	X	A3.G1.34
19.00	25	30	3/8"-24UNF	X	A3.G1.45
			M10x1	X	A1.G1.35
20.64	27	32	3/8"-24UNF	X	A2.L2.A7
			M10x1	X	A2.L2.F6
22.22	27	32	3/8"-24UNF	X	A2.L2.A8
			M10x1	X	A2.L2.F7

++++
 ++++
 ++++
 ++++

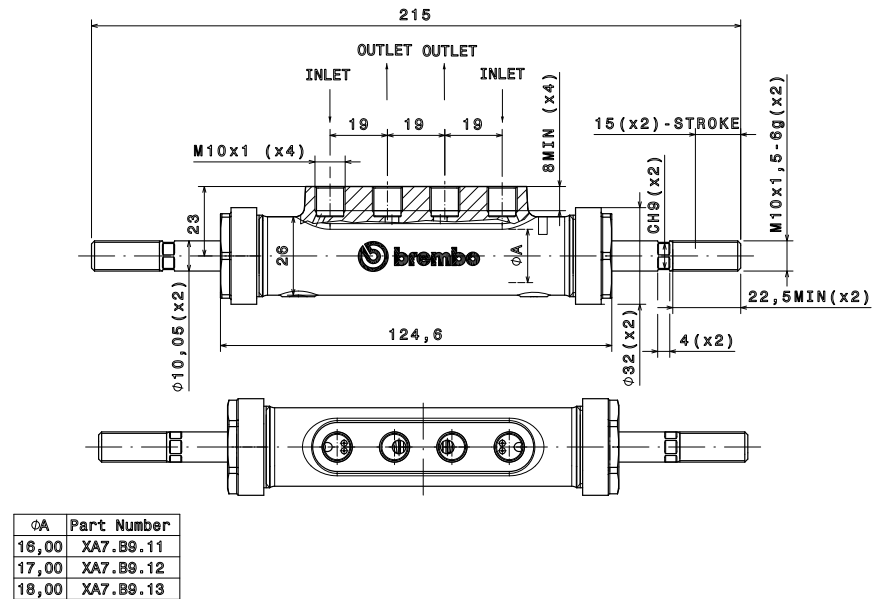
++++
 ++++
 ++++
 ++++

XA6.S2.11/15 - XA6.S2.A1/A5 FORGED MASTER CYLINDER



4

P/N XA7.B9.11/13 TWIN MASTER CYLINDER FOR HANDBRAKE



++++
 ++++
 ++++
 ++++

